

Technical Center

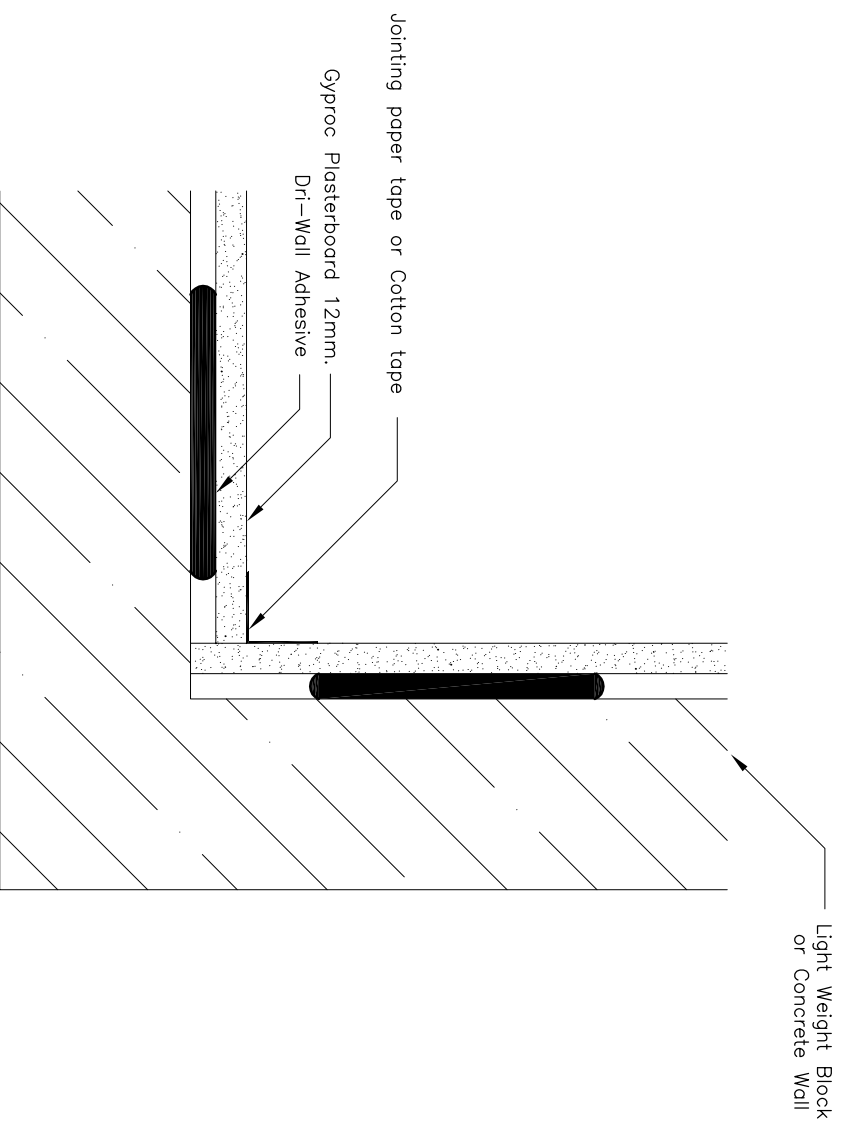
Title :

Drilyner: Plan - External Corner Detail

Dwg no. :	Scale :	Date :
–	None	17 Mar 2008
Approved :	File Ref :	
Pranote S.	Package3.3-Drilyner: Corners Details.dwg	

This drawing is provided to customers free of charge and the details show are subject to the accuracy of the information provided to Thai Gypsum at the time the drawing was originally requested. As a result of this sole liability for the details show cannot be accepted by Thai Gypsum. the drawing should therefore be approved by the project design and management authority before use to ensure that it meets with their specific project requirements. It should also be read in conjunction with Thai Gypsum's current literature available at [www.thaigypsum.com](http://www.thaigypsum.com) - Topping and finishing in accordance with Thai Gypsum's current recommendations is assumed - We would also draw your attention to the Construction (Design and Management) which detail the legal duties of clients, client's agents, designers and contractors involved in construction projects.





Technical Center

Title :

## Drilyner: Plan - Internal Corner Detail

Dwg no. :	Scale :	Date :
–	None	17 Mar 2008
Approved :	File Ref :	
Pranote S.	Package3.3-Drilyner: Corners Details.dwg	

This drawing is provided to customers free of charge and the details show are subject to the accuracy of the information provided to Thai Gypsum at the time the drawing was originally requested. As a result of this sole liability for the details show cannot be accepted by Thai Gypsum. the drawing should therefore be approved by the project design and management authority before use to ensure that it meets with their specific project requirements. It should also be read in conjunction with Thai Gypsum's current literature available at [www.thaigypsum.com](http://www.thaigypsum.com) - Topping and finishing in accordance with Thai Gypsum's current recommendations is assumed - We would also draw your attention to the Construction (Design and Management) which detail the legal duties of clients, client's agents, designers and contractors involved in construction projects.



